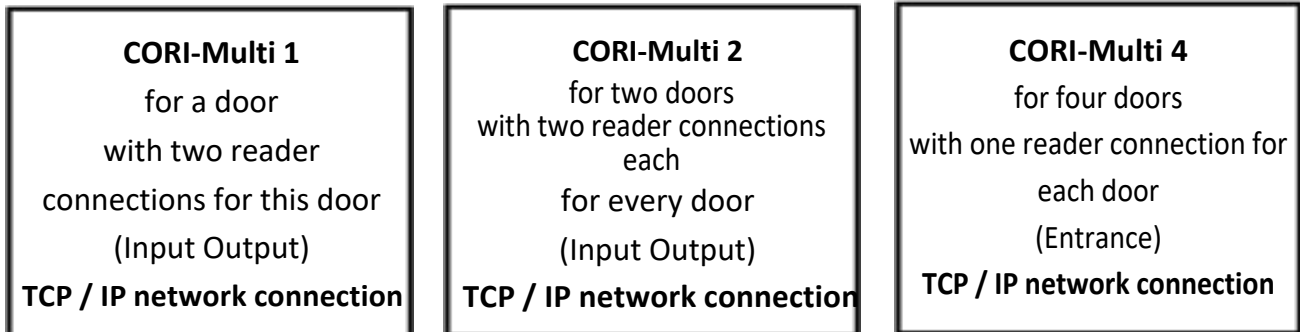




ID-Management Software



The CORI-Multi access controllers are automatically read into the PC management software for Windows during commissioning and regulate, control and monitor after configuration, autonomously and centrally without a connected computer, access via doors, gates, turnstiles, barriers etc. to private real estate and commercial area.

Single systems for a door up to large systems with an unlimited number of controllers can be used. Each controller can save and manage the authorizations for up to 20,000 people. The allocation of authorizations and assignments to time windows, holiday regulations and event storage takes place via the TCP / IP network with the management software for Windows.

You can connect a variety of readers to the existing Wiegand connections on the access controller. As possible media you can use reading units for Bluetooth cell phones and smartphones, fingerprints, all common RFID transponders, keypads, magnetic strips and contactless or contact-based readers.

The software's monitor function enables real-time display of all processes in the system. When opening events occur, you can also show a previously saved photo. The event memory can store up to 100,000 events offline, which can be imported as required or regularly via the software to create extensive reports. Other functions such as anti passback, multi-card access, automatic door control and alarm control are comprehensively described in the German-language operating instructions.

Software German or English



power supply and housing



WLAN adapter / network switch



Housing with switching power supply:



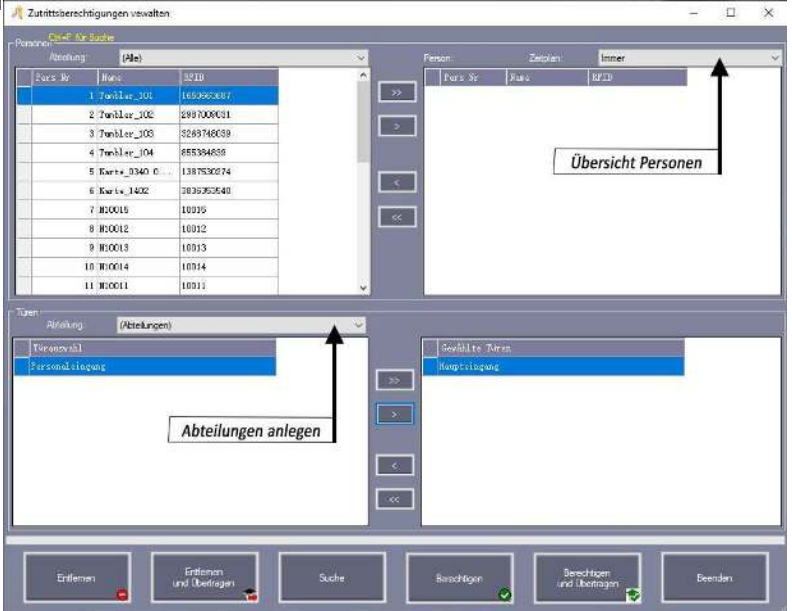
CORI-Multi 1:



Monitoring window:



Record people:



Manage access rights: